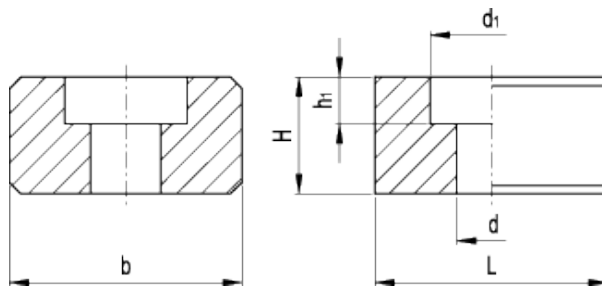


# GN 230

Shallow T-nuts



## technical informations

### Material

Ground and hardened black-oxide steel body.

### Features and applications

GN 230 shallow T-nuts are used for aligning and positioning jigs and fixtures and machining tables with DIN 650 T-slots. For this purpose they are inserted into the aligning slots of the jig or fixture.

Standard Elements	Main dimensions						for screw DIN 84/DIN 912	Weight
	Description	$b_{h6}$	L	H	d	$d_1$		$h_1$
GN 230-10	10	20	8	4.5	8	4.3	M4x10	10
GN 230-12	12	20	8	5.5	10	5.3	M5x12	11
GN 230-14	14	22	10	6.6	11	6.3	M6x16	19
GN 230-16	16	22	10	6.6	11	6.3	M6x16	22
GN 230-18	18	22	10	6.6	11	6.3	M6x16	25
GN 230-20	20	22	10	6.6	11	6.3	M6x16	28
GN 230-22	22	32	12	6.6	11	6.3	M6x16	59



STANDARD MACHINE ELEMENTS WORLDWIDE